

Refinio Media Wall by Peerless-AV®

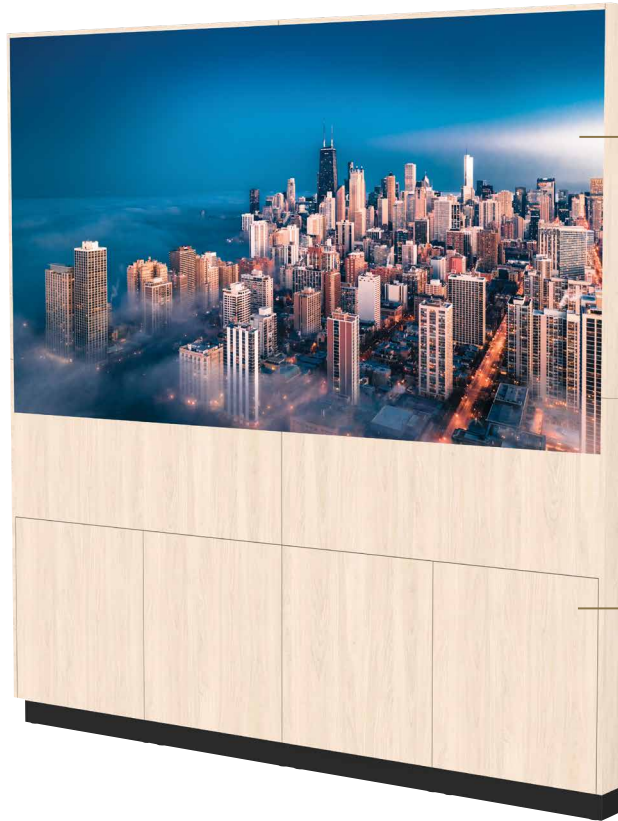
108" ALL-IN-ONE dvLED DISPLAY SOLUTION



Refinio Media Wall by Peerless-AV® is a refined, all-in-one dvLED display solution designed for high-end executive boardrooms, conference rooms, and training facilities. Combining a FHD COB dvLED display, precision-engineered mounting system, and furniture-grade thermally fused laminate (TFL) cabinetry, Refinio delivers a complete, ready-to-install solution with minimal room preparation. Integrated base cabinetry houses critical AV components for clean, accessible integration – eliminating the need for a separate equipment room – while a wide selection of anti-fingerprint solid colors, and woodgrain finishes ensures lasting durability with a premium aesthetic.



- Also available 108" with VC housing (LEDMW-108-2KVC models) 136" (LEDMW-136 models) and 163" (LEDMW-163 models) dvLED configurations to support a variety of room sizes and viewing distances
- Features furniture-grade TFL cabinetry offered in a range of standard and custom finishes
- Includes press-to-release, soft-close cabinet doors for smooth, quiet access and a premium user experience
- Integrated LED base illumination elevates the overall design, creating a more polished, professional environment
- Utilizes natural convection cooling, and also includes thermostatically controlled, whisper-quiet fans to maintain proper operating temperatures
- Supports integration of third-party AV equipment, including video conferencing systems and power protection



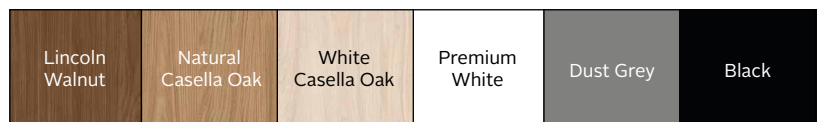
ALL-IN-ONE SOLUTION
Includes a FHD COB dvLED display, precision-engineered mounting system, and furniture-grade TFL cabinetry, for fast and streamlined technology deployment

INSTALLATION-FRIENDLY DESIGN
Designed for quick installation with minimal room preparation to reduce overall project time and cost

CONVENIENT COMPONENT STORAGE
Base cabinets include an integrated 2RU rack, shelf, and component tray to maximize usable space and keep equipment organized and easily accessible

White Casella Oak Finish Shown

CABINERY COLOR OPTIONS



Please visit peerless-av.com/en-us/patents for patent information.

dvLED Display Specifications

FHD Model

SIZE	108"
PIXEL PITCH	1.2 pp
RESOLUTION	FHD
LED LAMP TYPE	COB
MAX BRIGHTNESS	600 nits
CONTRAST	12,000 : 1
COLOR BIT	22 bit
REFRESH RATE	3840 Hz
VIEWING ANGLE	H 178° / V 178°
RECEIVING CARD	NS6323A
CONTROLLER	NovaStar MX20
OPERATING TEMPERATURE RANGE	14°F to 113°F (-10° to 45°C)
OPERATING HUMIDITY RANGE	10% to 80%
LIFESPAN	100,000 Hours
INPUT VOLTAGE	100-240V, 50/60Hz
POWER CONSUMPTION	369W Avg
	1102W Max
COLOR GAMUT	DCI-P3 : 99.49%
	Rec. 709 : 100%
	Rec. 2020 : 86.13%
SPARE PARTS INCLUDED	Pixel Modules (x4), Receiver Cards (x2), Hub Boards (x2), Power Supplies (x2), Service Tool



dvLED Controller Specifications

NOVASTAR MX20 (FHD)

INPUTS	2x HDMI v1.3, 1x 3G-SDI
OUTPUTS	LED OUTPUTS: 6x 1 Gbps
	OPTICAL FIBER OUTPUTS: 2x 10 Gbps
	Genlock
BIT RATE	10 bit
CONTROL	TCP/IP, RS232: 2x RJ45
LOADING CAPACITY	MAX PIXELS PER OUTPUT: 650,000 Pixels
TOTAL PIXELS	3.9 Million Pixels
	MAXIMUM INPUT RESOLUTION: 1920 x 1080 @ 60Hz
	MAX OUTPUT WIDTH/HEIGHT: 3840 Pixels x 2560 Pixels
BUILT-IN SCALING	Custom, Pixel to Pixel, Snap to Canvas, Fill Screen
SUPPORTED LAYERS	~3 Layers
POWER INPUT	100-240V, 50/60Hz
MAX POWER CONSUMPTION	50W
OPERATING TEMPERATURE RANGE	-4°F to 113°F (-20°C to 45°C)
RACK DIMENSIONS	1RU
DIMENSIONS	19" x 1.96" x 15.12" (482.6 x 49.9 x 384mm)
WEIGHT	9.92lb (4.5kg)
CERTIFICATIONS	CE, RoHS, FCC, IC, UL, CB
ACCESSORIES INCLUDED (1 EACH)	Power Cord, Ethernet Cable, HDMI Cable, Certificate of Approval

Product Specifications

	DIMENSIONS (W x H x D)	PRODUCT WEIGHT	FINISH	CABINET COLORS
LEDMW-108-2KB	96.22" x 100.00" x 7.05" (2444 x 2540 x 179mm)	445lb (202kg)	Thermally Fused Laminate (TFL)	Black
LEDMW-108-2KW				Premium White
LEDMW-108-2KG				Dust Grey
LEDMW-108-2KL				White Casella Oak
LEDMW-108-2KM				Natural Casella Oak
LEDMW-108-2KD				Lincoln Walnut

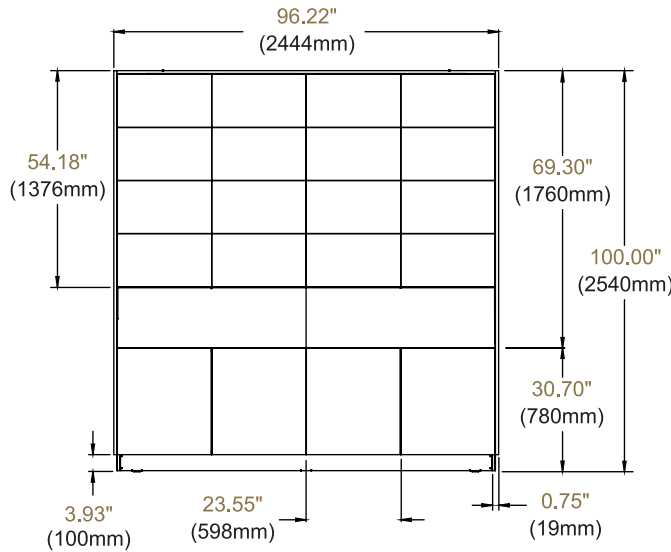
Package Specifications

	PACKAGE SIZE (W x H x D)	PACKAGE SHIP WEIGHT	PACKAGE UPC CODE	PACKAGE CONTENTS	UNITS IN PACKAGE
LEDMW-108-2KB	COMING SOON	COMING SOON	735029361640	FHD COB dvLED Display @ 1.2 pp	1
LEDMW-108-2KW			735029361657	NovaStar MX20 dvLED Mount	
LEDMW-108-2KG			735029361664	Furniture-Grade TFL Cabinetry Thermostatically Controlled Fans (4)	
LEDMW-108-2KL			735029361671	2RU Equipment Rack (1) Shelf (1)	
LEDMW-108-2KM			735029361688	Universal AV Component Tray (1)	
LEDMW-108-2KD			735029361695	Power Strip (2) LED Base Lights	

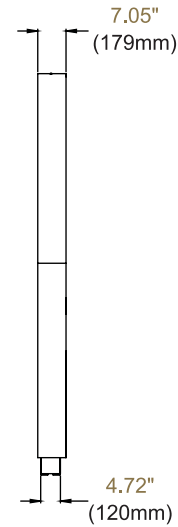
Accessories

- LEDMW-A2RU:** 2RU Equipment Rack
- LEDMW-ACCC:** Crestron® Collab Compute Mounting Bracket
- LEDMW-ACFX:** Crestron® Flex Mounting Bracket
- LEDMW-ACTY:** Universal AV Component Tray
- LEDMW-ADLK:** Door Lock
- LEDMW-AFAN:** Exhaust Fan
- LEDMW-ASHF:** Shelf
- PVP1200-CPL6:** Power Strip

All dimensions = inch (mm)

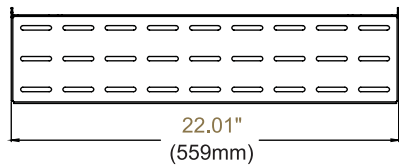


FRONT VIEW

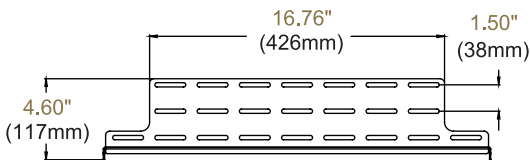


SIDE VIEW

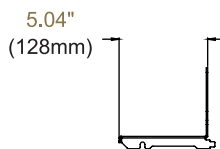
SHELF



TOP VIEW

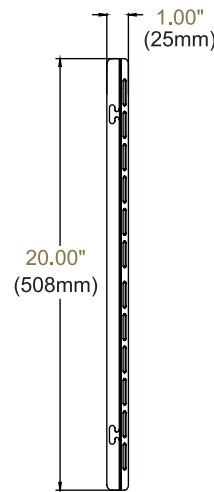


FRONT VIEW

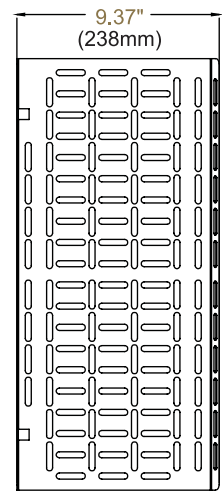


SIDE VIEW

COMPONENT TRAY



SIDE VIEW



FRONT VIEW

Architect Specifications

The Refinio Media Wall by Peerless-AV® 108" All-In-One dvLED Display Solution shall be a Peerless-AV LEDMW-108-2K Models models and shall be located where indicated on the plans. Assembly and installation shall be done according to instructions provided by the manufacturer.

Visit peerless-av.com to see the complete line of AV solutions from Peerless-AV, including outdoor displays, kiosks, display mounts, projector mounts, carts/stands, and a full assortment of accessories.

Peerless-AV
2300 White Oak Circle
Aurora, IL 60502
USA
(800) 865-2112
(630) 375-5100

Peerless-AV EMEA
Unit 2 Curo Park
Frogmore, St. Albans
Hertfordshire, AL2 2DD
United Kingdom

+44 (0) 1923 200 100

Peerless-AV B.V.
Papendorpseweg 75
3528 BJ Utrecht
The Netherlands

+31 (0) 70 770 8037

Peerless-AV Latin America
Av. de las Industrias 413
Parque Industrial Escobedo
General Escobedo, N.L.,
México, 66062

+52 (81) 8384-8300

